

This improvement has been declared a Limited Access Highway from Station 922+52.2 To Station 1025+00 by action of the Director of Highways and recorded in Volume 25 Page 156 of the Directors Journal pursuant to law.

Spiralled curves indicated on this plan are developed as outlined in "Transition Curves for Highways" by Joseph Barnett, published in 1940 by U.S. Government Printing Office.

Offsets will be from tangents on spiral curves.

CENTER LINE SURVEY PLAT

INTERSTATE ROUTE 77 GUE-77-15.57

GUERNSEY COUNTY, OHIO

LIBERTY TWP T-3N, T-4N, R-3W SECTIONS 1, 2, 9, 21 & 22

89

Received _____
Recorded _____
Book _____ Page _____
County Recorder

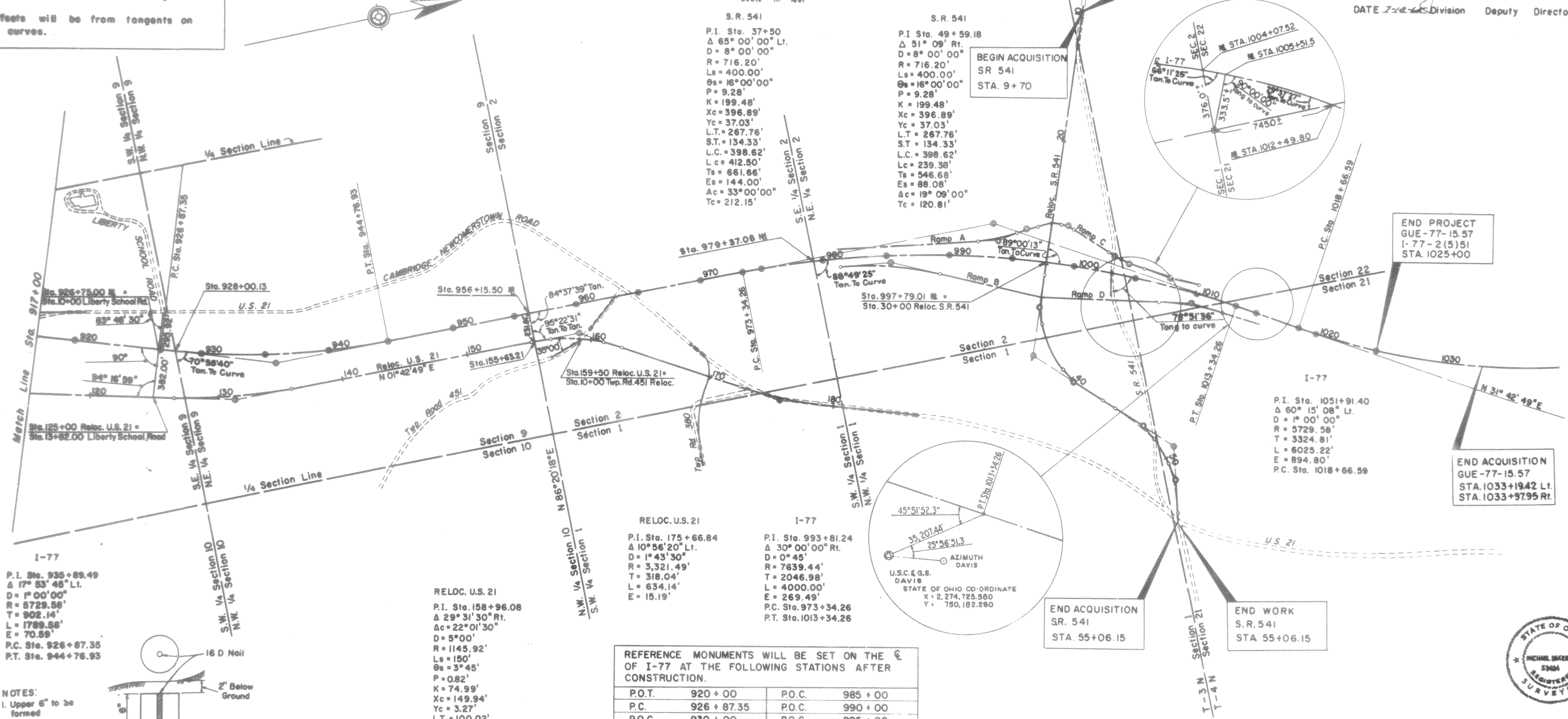
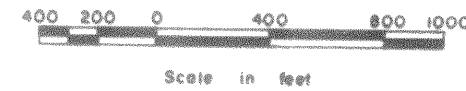
FED. RD. DIVISION	STATE	PROJECT
2	OHIO	I-77-2(5)51

370

I-77-2(5)51
LIMITED ACCESS HIGHWAY

3
26
R/W

CERTIFICATE OF APPROVAL
APPROVED _____
DATE 7-2-65 Division Deputy Director

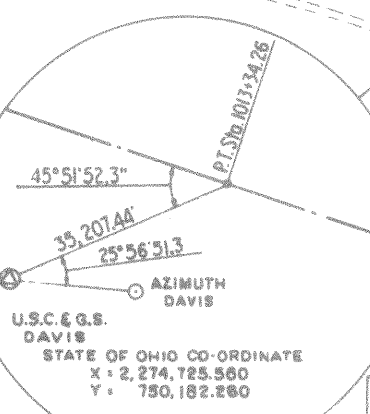


I-77
P.I. Sta. 935+89.49
Δ 17° 53' 48" Lt.
D = 1° 00' 00"
R = 8729.58'
T = 902.14'
L = 1798.88'
E = 70.59'
P.C. Sta. 926+87.35
P.T. Sta. 944+76.93

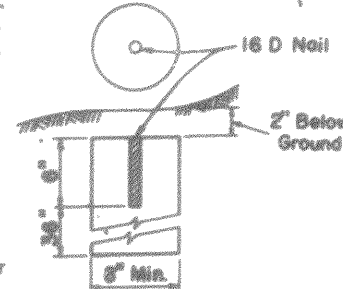
RELOC. U.S. 21
P.I. Sta. 158+96.08
Δ 29° 31' 30" Rt.
Ac = 22° 01' 30"
D = 5° 00'
R = 1145.92'
Ls = 150'
Gs = 3° 45'
P = 0.82'
K = 74.99'
Xc = 149.94'
Yc = 3.27'
L.T. = 100.02'
S.T. = 50.02'
L.C. = 149.97'
Ts = 377.17'
Lc = 440.00'
Es = 39.97'

RELOC. U.S. 21
P.I. Sta. 175+66.84
Δ 10° 58' 20" Lt.
D = 1° 43' 30"
R = 3321.49'
T = 318.04'
L = 634.14'
E = 15.19'

I-77
P.I. Sta. 993+81.24
Δ 30° 00' 00" Rt.
D = 0° 45"
R = 7639.44'
T = 2046.98'
L = 4000.00'
E = 269.49'
P.C. Sta. 973+34.26
P.T. Sta. 1013+34.26



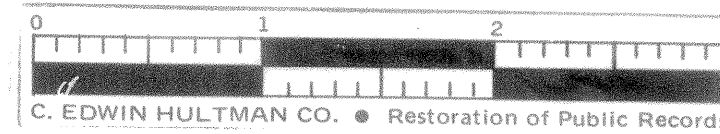
- NOTES:
- Upper 6" to be formed
 - Concrete to be Class "C"
 - Monuments to be placed by Contractor



CENTERLINE REFERENCE MONUMENT DETAIL (Not to Scale)

REFERENCE MONUMENTS WILL BE SET ON THE C OF I-77 AT THE FOLLOWING STATIONS AFTER CONSTRUCTION.

P.O.T.	920 + 00	P.O.C.	985 + 00
P.C.	926 + 87.35	P.O.C.	990 + 00
P.O.C.	930 + 00	P.O.C.	995 + 00
P.O.C.	935 + 00	P.O.C.	1000 + 00
P.O.C.	940 + 00	P.O.C.	1005 + 00
P.T.	944 + 76.93	P.O.C.	1010 + 00
P.O.T.	950 + 00	P.T.	1013 + 34.26
P.O.T.	955 + 00	P.O.T.	1015 + 00
P.O.T.	960 + 00	P.C.	1018 + 66.59
P.O.T.	965 + 00	P.O.C.	1020 + 00
P.O.T.	970 + 00	P.O.C.	1025 + 00
P.C.	973 + 34.26	P.O.C.	1030 + 00
P.O.C.	975 + 00		
P.O.C.	980 + 00		



C. EDWIN HULTMAN CO. • Restoration of Public Records

I hereby certify that this plat is a true delineation of a survey made for the Ohio Department of Highways in _____ by Michael Baker Jr. _____ Date June 15, 1965
Registered Land Surveyor S-3424



CENTER LINE SURVEY PLAT